

\$275,000
4BR/2BA | 1724 SF

DEL SOL SUBDIVISION

Convenient open floor plan. Spacious kitchen features a bricked pull up snack bar. Primary bedroom suite has a dual bath vanity plus a separate shower and tub. Tile and engineered wood flooring. Carpet in secondary bedrooms.

Ring cameras and security system remain. Lots of storage closets.

Gas water heater.

Electric appliances.

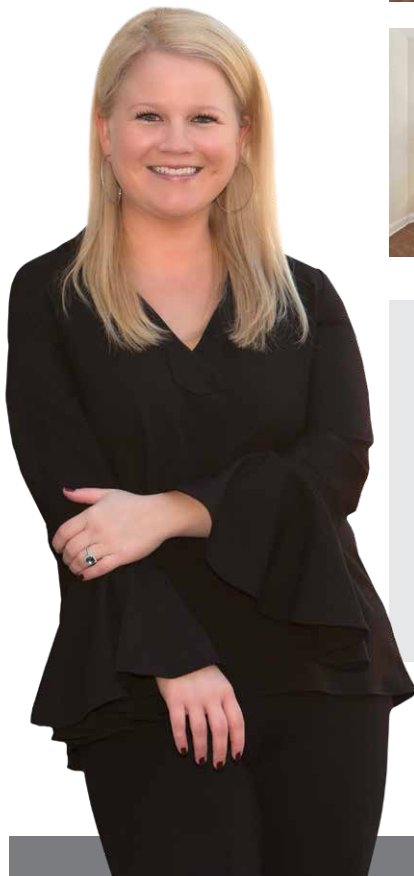
Double car garage with attic storage. Large fenced back yard.

Covered patio. Swing set remains. Ask about negotiable furnishing options.

Revised 12.13.22



358 Del Sol East, Covington



Kelly Waltemath **TEAM LEADER
Realtor®
Licensed in LA**



985.727.7000 office | **504.236.8587** cell
KellyWaltemath.com | **KellyWaltemath@gmail.com**



Keller Williams Realty Services, Licensed in LA
1522 W. Causeway Approach, Mandeville, LA 70471
Independently Owned & Operated

THE KELLY WALTEMATH GROUP **2021 TOTAL SALES \$19,119,869**