

\$829,000
4BD/3.5BA | 3914 SF

**THE ARBORS
ESTATES**

Welcoming, open two-story floor plan. Spacious kitchen and living area.

First floor primary bedroom suite has a luxury bath with separate tub and shower plus a huge walk-in closet.

Create a home office or child's study from extra space upstairs or down.

Large corner lot with mature trees.

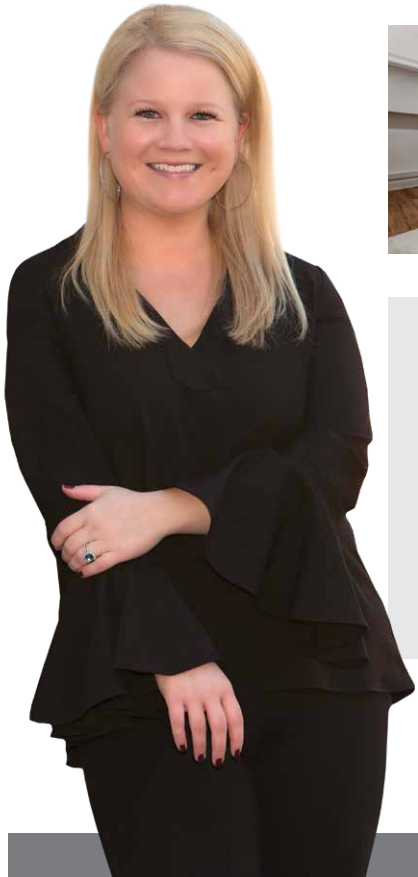
Front and back porches.

This gated Westbank community has a reciprocal agreement with English Turn for facility use.

Revised 05.13.22



11 Sugarberry Place, New Orleans



Kelly Waltemath

**TEAM LEADER
Realtor®
Licensed in LA**



985.727.7000 office | **504.236.8587** cell
KellyWaltemath.com | **KellyWaltemath@gmail.com**



Keller Williams Realty Services, Licensed in LA
1522 W. Causeway Approach, Mandeville, LA 70471
Independently Owned & Operated

THE KELLY WALTEMATH GROUP 2021 TOTAL SALES \$19,119,869